



MASSACHUSETTS TURNPIKE AUTHORITY
State Transportation Building, 10 Park Plaza, Suite 4160, Boston, Massachusetts 02116
(617) 248-2800

Matthew J. Amorello
Chairman

August 11, 2006

Mr. James M. Kalustian, President
Armenian Heritage Park
28 Flanders Road
Belmont, MA 02478

Dear Mr. Kalustian:

I am writing to approve your proposal to design and construct a public open space on Central Artery Parcel 13. I believe that your efforts to date and your commitment to devote substantial financial resources to this park demonstrate both the appropriateness of your concept and your generosity to the larger community.

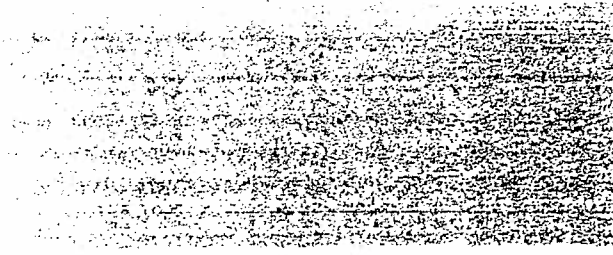
As authorized by the MTA Board on June 29, 2006, I am designating your organization as the designers and builders of the park on this parcel.

I would like to take this opportunity to thank you and wish you well in your efforts to contribute to the rebuilding of downtown Boston as part of the completion of the Central Artery/Tunnel Project.

Sincerely,

A handwritten signature in black ink that reads 'Matt Amorello'.

Matthew J. Amorello
Chairman



P.O. Box 196, Sudbury, MA 01776

October 12, 2006

Chairman John Cogliano
Board of Directors
Massachusetts Turnpike Authority
State Transportation Building Suite 4160
Boston MA 02116

Dear Chairman Cogliano,

We have been following with great interest the articles and discussions about the proposed plans for Parcel 13 of the Rose Kennedy Greenway project. We are particularly delighted to see that a labyrinth is such an integral part of these plans. The ancient pattern of the labyrinth has crossed time and cultures and even religions throughout history and has become a universal metaphor of peace, harmony, contemplation. In addition, it is a imaginative and creative device for people of all ages and abilities and backgrounds to engage with each other as they walk. How wonderful to have this symbol in such a large public space in the center of Boston!

We cannot imagine a more perfect gift to this community in these times, in our city and our world, and even in the midst of these discussions about how to honor the variety of immigrant experiences that have been so vital to the growth of this beloved Boston. As we see it, the inclusion of the labyrinth in this parcel is itself a healing gesture toward the larger community, inviting all expressions of faith and culture, and ethnicity to walk the path of diverse community together. The lessons of the labyrinth are deep, but very obvious with every step we take: We are all on this path together. We may not walk at the same pace. In fact, we may feel like we are going in different directions. Sometimes we are walking in step with each other, other times we are alone. But all of us are ultimately on the same path, and that path offers us all opportunities for reconciliation and wholeness.

We applaud the vision of the architects and planners of the Greenway and this most healing gift that the Armenian community wishes to offer the community of Boston. May it serve as a gesture for the future of our neighborhoods, our city and wider community.

Beth Mace

Beth Mace, President
Labyrinth Guild of New England
www.labyrinthguild.org